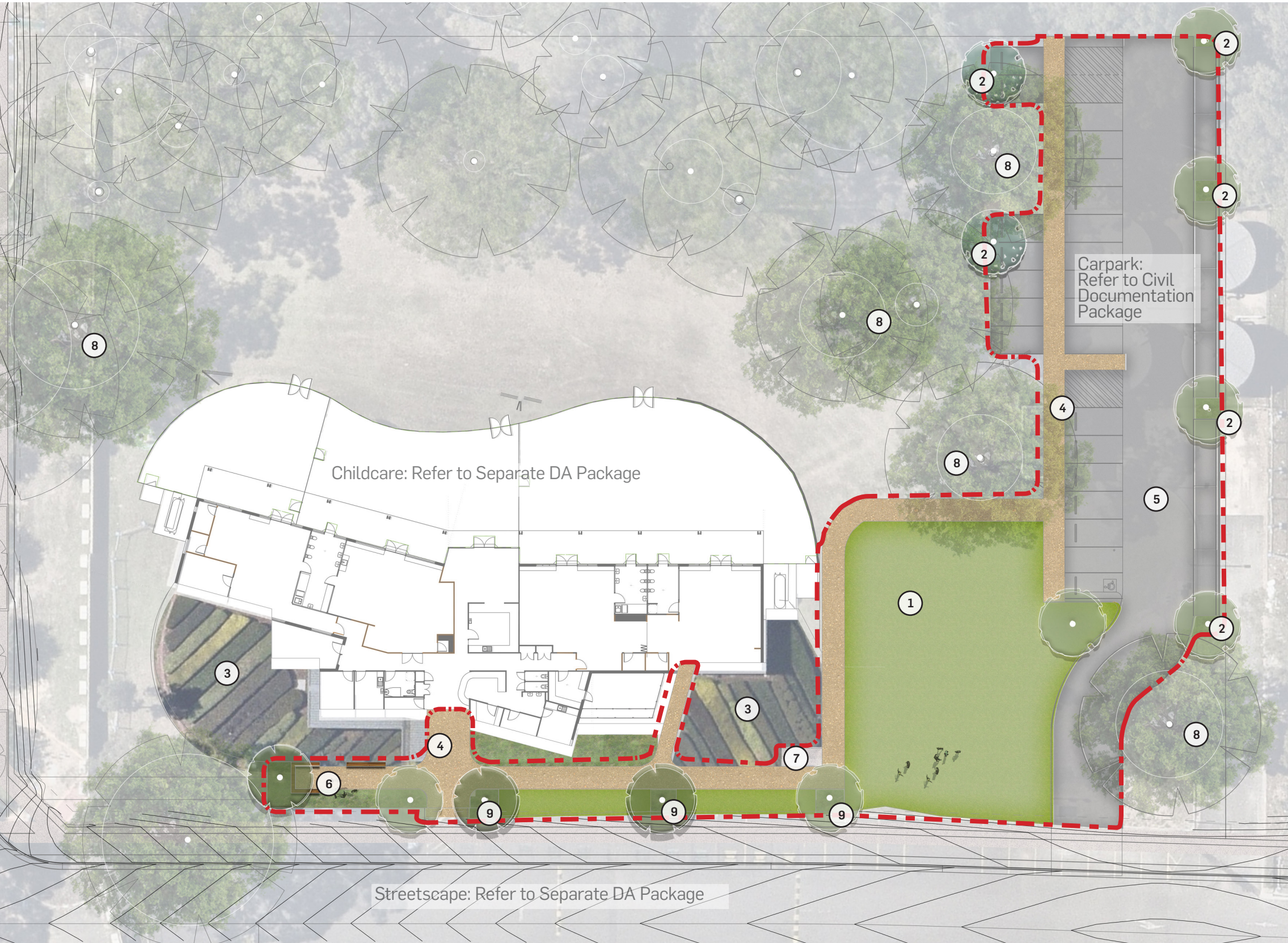


LANDSCAPE CONCEPT PLAN - CHILDCARE CENTRE



- Legend**
- Stage 7 extent of works
 - 1 Turf
 - 2 Trees in blister with understory planting
 - 3 Existing planting to be retained and protected
 - 4 Concrete pedestrian path
 - 5 Car park
 - 6 Proposed garden bed with seating area
 - 7 Bike racks
 - 8 Existing trees to be retained and protected
 - 9 Trees with understory planting in verge

Figure 1 Landscape Concept Plan

WSU MILPERRA - STAGE 7 CHILDCARE CENTRE DEVELOPMENT APPLICATION

PLANTING SCHEDULE

Plant Schedule - Stage 7 - TREES						
Plant_Code	Plant_Botanic Name	Plant_Common Name	Plant_Container Size	Tree_Ø_Tree Canopy	STAGE 7	Location
					Qty	
ANG cos	Angophora costata	Smooth-barked Apple	200 Litre	6000	12	STAGE 7
Grand total: 12					12	

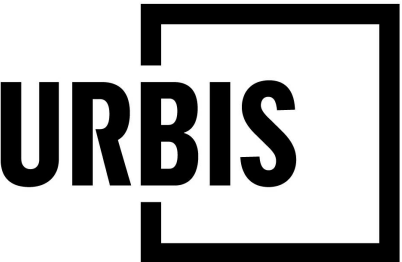
Plant Schedule - Stage 7 - SHRUBS & GROUNDCOVERS.						
Plant_Code	Plant_Botanic Name	Plant_Common Name	Plant_Container Size_Ø	Plant_Supply Spread_Ø	STAGE 7	Location
					Qty	
DIA cae	Dianella caerulea	Paroo Lily	200	500	210	STAGE 7 - Streetscape
LOM mis	Lomandra confertifolia ssp rubiginosa 'Mist'	Basket grass	140	800	15	STAGE 7 - Streetscape
LOM sea	Lomandraconfertifolia 'Seascape'	Basket grass	200	800	28	STAGE 7 - Streetscape
LOM tan	Lomandra longifolia 'Tanika'	Basket grass	140	800	92	STAGE 7 - Streetscape
Grand total: 345					345	

LEGEND

<div>PA01</div>	PAVING TYPE 1: INSITU EXPOSED AGGREGATE CONCRETE
<div>GA01</div>	GARDEN TYPE 1
<div>GA02</div>	GARDEN TYPE 2: EXISTING PLANTING
<div>TU01</div>	TURF TYPE 1

PATH: C:\02_REV\TPO049163_MILPERRA\WSU (L)\P0049163_VSM\Milperra_SD_RVT23(local).rvt

PLOT DATE: 17/12/2024 6:14:00 PM



KEY PLAN					
1	Stage 7 DA	LB	YV	17/12/2024	
REV	DESCRIPTION	DWN	CHK	DATE	

DISCLAIMER

Copyright by Urbis Pty Ltd. This drawing or parts thereof may not be reproduced for any purpose or used for another project without the consent of Urbis other than reproduction for the purposes of actual ordering, supply, installation or construction. This drawing must be read in conjunction with all relevant contracts, schedules, specifications, drawings and any other issued written instructions. Do not scale from drawings. Written figured dimensions take preference to scaled dimension and must be verified on site before proceeding with any work. All discrepancies must be referred to the superintendent for a written decision prior to ordering, supply or installation. Urbis must be notified in writing of any discrepancies.

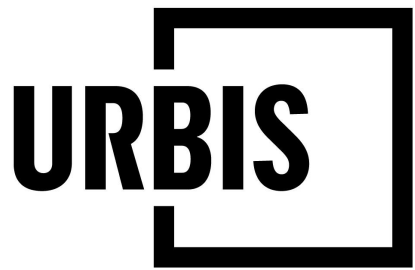
PROJECT DIRECTOR:

CLIENT

Mirvac

ISSUE	PROJECT NO.
SCALE	P0049163
1 : 500 @A1	NORTH
DRAWING NO.	REVISION
PL-701	1
DRAWING TITLE	
Stage 7 - Childcare Centre Planting Schedule	





2 & 2a Bullecourt Road, Milperra

1